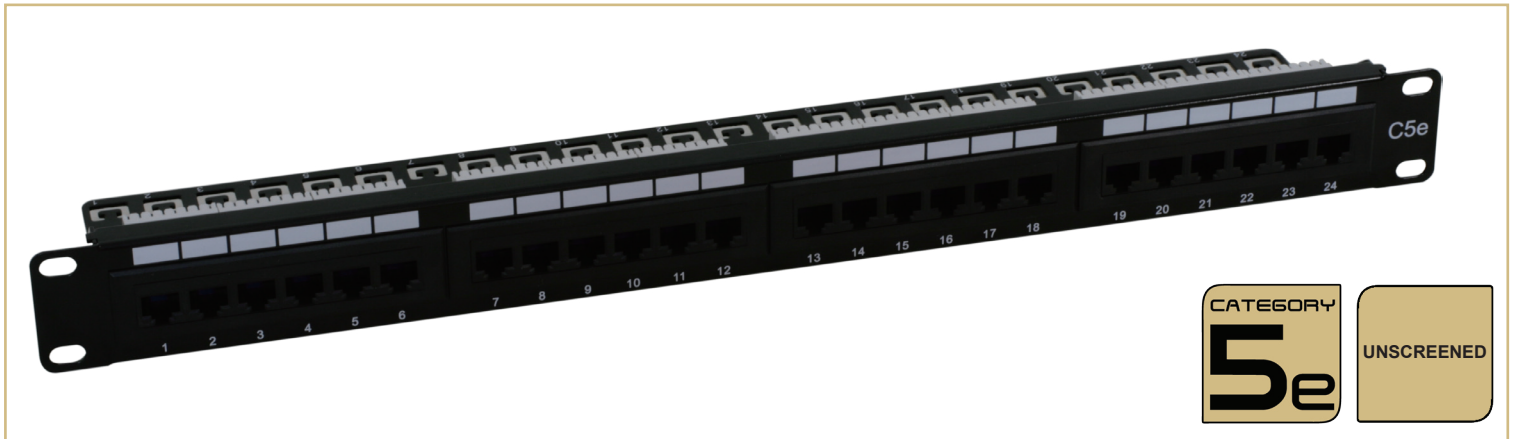


# Unscreened Category 5e RJ -45 Patch Panel Range

V.3.0



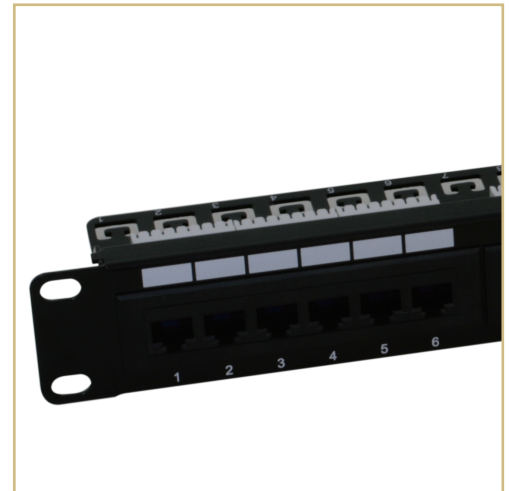
## Description

FibreFab's Category 5e patch panel range exceeds the transmission line performance requirements of IEC and TIA for CLASS D/Category 5e systems. The panels are designed for mechanical and electrical reliability using quality materials and processes to create a panel solution which delivers a consistent high level of systems performance.

Each Category 5e patch panels comply with the requirements of ISO/IEC 11801 (2<sup>nd</sup> Edition): 2010 and support all applications designed for CLASS D/Category 5e applications including 1000BASE-T (Gigabit Ethernet), ATM 155, 100BASE-Tx, Token Ring 100Mbs-1 and 1G FCBASE-T.

## Features/Benefits

- ▶ **Class D/Category 5e standards compliant**
- ▶ **Electrically compliant beyond 100MHz**
- ▶ **19" rack mountable**
- ▶ **6 - port RJ-45 modules**
- ▶ **Individual port identification**
- ▶ **Integral label feature**
- ▶ **Universal wiring blocks for easy termination**
- ▶ **Terminates 22AWG to 26AWG cables**
- ▶ **Supports TIA 568 A & B wiring configurations**
- ▶ **Terminates 22AWG to 26AWG cables**
- ▶ **Colour coded wiring blocks for easy cable lacing**
- ▶ **Rear cable management bar**
- ▶ **Durability:**  
Socket Contacts: 750 plug insertion cycles minimum  
Wiring block: 25 termination cycles minimum
- ▶ **Earthing kit and cage nuts included as standard**
- ▶ **RoHS compliant 2002/95/EC**
- ▶ **REACH / SVHC compliant regulation (EC) No. 1907/2006**



## Ordering Information

DESCRIPTION	COLOUR	HEIGHT	PART NO.
Unscreened Category 5e patch panel - 24 port	Black	1U	005-001
Unscreened Category 5e patch panel - 48 port	Black	2U	005-002



+44 (0) 870 127 3330



+44 (0) 870 127 3331



sales@fibrefab.com



www.fibrefab.com